

entrance collection

high performance entrance matting

heavy contract

20 colourways





Primary Entrance Matting
Tyre Tile

100% recyclable

Made from 100% recycled tyres

One of the lowest carbon footprint flooring products

We are ISO14001 environmental systems accredited

Manvers production facility is the cleanest in Europe

Extra heavy duty matting systems

Designed for entrance areas with heavy traffic

Suitable for trolley and wheelchair traffic

Scrapes and wipes dirt and moisture from shoes saving usage of chemicals in cleaning inner floro products

DDA conformity

Weight	8410gsm
Thickness	10mm
Composition	Rubber Tyre with Nylon Tread
Backing	Polyethylene Webbing
Tile Size	304cm x 304cm
Wear Classification	Heavy Contract
Flammability	
DIN 4102	B1
Colour Fastness	
To Light	6
Wet Rubbing	4-5
Dry Rubbing	5
Wet Shampoo	4-5

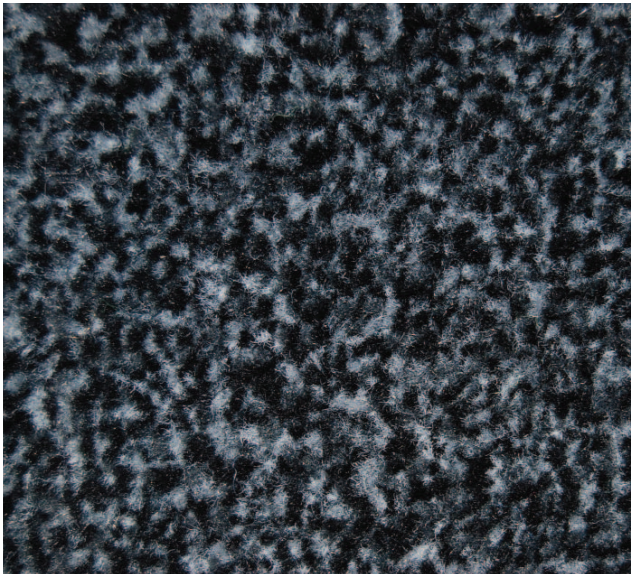
INSTALLATION

Sub floors should be clean, dry and flat and prepared in accordance with BS5325. Timber floors should be covered with appropriate sheet or other material. Tyre Tiles should be fully bonded to the sub floor using F balls F3, F74 or F81 dependant on inherent weather conditions or equivalent. Tyre Tile should be laid rotationally through 90 degrees. Tiles should be allowed to condition for a minimum of 24 hours before use. An installation guide is available from the Mat. Works sales office.

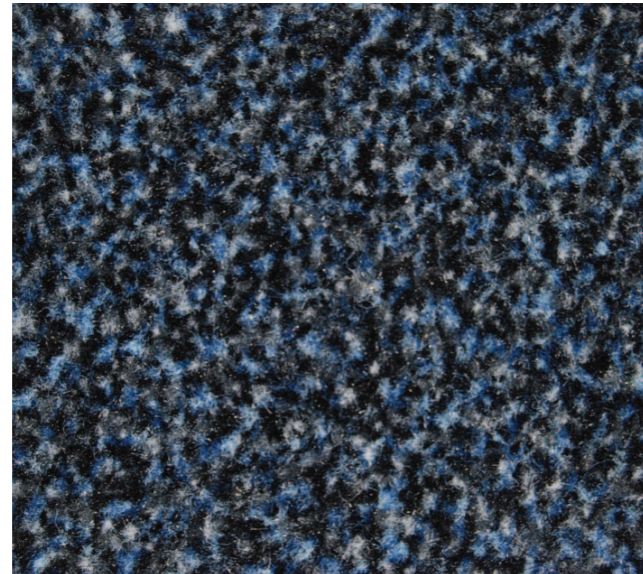
MAINTENANCE

It is recommended that a maintenance schedule be initiated from the date of installation, regular vacuuming with a rotary brush vacumm cleaner is essential all spillages and stains should be dealt with immediately.
PLEASE NOTE: For technical reasons, as with all textile materials, it may not be possible to colour match from different batches. Orders that need to colour match should be placed at the same time. Production may therefore show variations to the sample card.

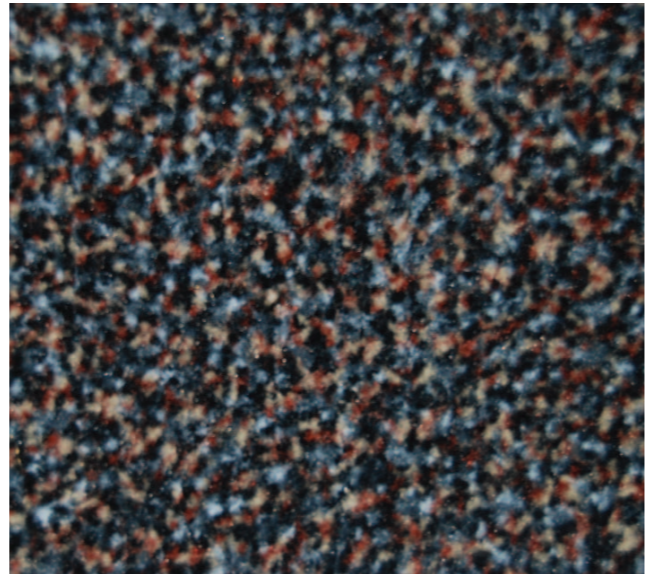




Secondary Entrance Matting
Platoon Absorber Anthracite



Secondary Entrance Matting
Platoon Absorber Blue



Secondary Entrance Matting
Platoon Absorber Brown

Platoon Absorber is our entry level tufted matting, designed with value and a budget in mind. Constructed from 100% solution dyed nylon and incorporating an attractive dog tooth pattern which effectively hides dirt within the design.

SPECIFICATION

Style	Tufted Twist Pile
Fibre Construction	100% Polyamide
Tuft Gauge	5/32
Pile Yarn Weight	850 gsm
Pile Height	6mm
Pile Density	75,000 tufts per2 m
Total Weight	2650 g/m2
Thickness	10mm (Sheet)
Secondary Backing	PVC
Roll Size	25.00m x 2.00m
Mat Size	90x60, 90x150 and 120x180mm (Mat)
Wear Classification	Heavy Contract

PERFORMANCE TEST

Electro Static	Less than 2Kv
Flammability	Bfl-s1 (BS EN ISO 11925. 2) (BS EN ISO 9239.1)

COLOURS:

Colour Fastness	(BS1006)
Light (BS1006:B02)	5
Wet Rubbing (BS1006:B01)	4 - 5
Dry Rubbing (BS1006:X12)	4 - 5
Wet Shampoo (BS1006:UK-TB)	4 - 5
Colour Options Available	3



Secondary Entrance Matting
Platoon Premier Dark blue



Secondary Entrance Matting
Platoon Premier Charcoal



Secondary Entrance Matting
Platoon Premier Mercury

Platoon Premier is an 80/20 wool/nylon mix with a monofilament scraper yarn.

With 30,000 scraper points per square metre plus the absorbency of the yarn, Platoon Premier scrapes dirt and towels moisture from the soles of shoes in 1 swoop.

SPECIFICATION

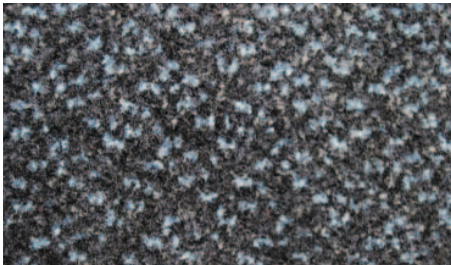
Style	Tufted Twist Pile
Fibre Construction	80% Wool / 20% Nylon + monofilament scraper
Tuft Gauge	1/8"
Pile Yarn Weight	1500 gsm
Pile Height	6mm
Pile Density	117,800 tufts per m2
Total Weight	3100 gsm (Sheet) 5420 gsm (Tile)
Thickness	10mm (Sheet) 12mm (Tile)
Secondary Backing	Flame Retardant Foam
Tile Backing	Bitumen
Roll Size	25.00m x 2.00m
Tile Size	50cm x 50cm (Tile)
Wear Classification	Heavy Contract

PERFORMANCE TEST

Electro Static	Less than 2Kv
Flammability	Bfl-s1 (BS EN ISO 11925. 2) (BS EN ISO 9239.1)

COLOURS:

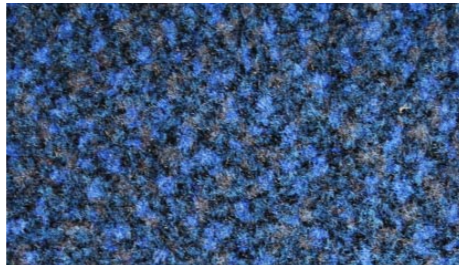
Colour Fastness	(BS1006)
Light (BS1006:B02)	5
Wet Rubbing (BS1006:B01)	4 - 5
Dry Rubbing (BS1006:X12)	4 - 5
Wet Shampoo (BS1006:UK-TB)	4 - 5
Colour Options Available	6



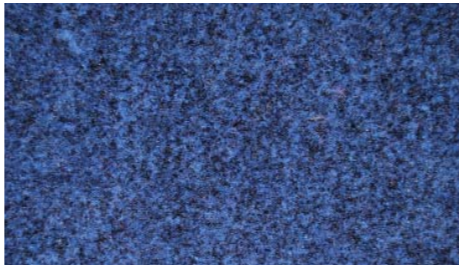
Secondary Entrance Matting
Platoon Brush Black Mottle



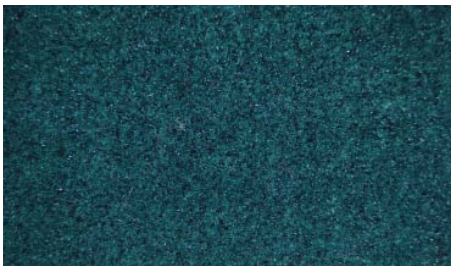
Secondary Entrance Matting
Platoon Brush Black Plain



Secondary Entrance Matting
Platoon Brush Blue Mottle



Secondary Entrance Matting
Platoon Brush Blue Plain



Secondary Entrance Matting
Platoon Brush Green Plain



Secondary Entrance Matting
Platoon Brush Grey Mottle



Secondary Entrance Matting
Platoon Brush Grey Plain

Platoon Brush is a 80/20 wool/nylon mix with an added monofilament scraper, this provides not only excellent absorbency but also the added benefit of scraping dirt from the soles of shoes protecting your internal walkways from the outside.

SPECIFICATION

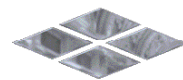
Style	Tufted Twist Pile
Fibre Construction	100% Polyamide with multifilament scraper
Tuft Gauge	1/8"
Pile Yarn Weight	1200 gsm
Pile Height	6mm
Pile Density	117,800 tufts per m2
Total Weight	2850 gsm
Thickness	8mm (Sheet) 10mm (Tile)
Primary Backing	Colback
Secondary Backing	Nitrile Rubber
Tile Backing	Bitumen
Roll Size	25.00m x 2.00m
Tile Size	50cm x 50cm (Tile)
Wear Classification	Heavy Contract

PERFORMANCE TEST

Electro Static	Less than 2Kv
Flammability	Bfl-s1 (BS EN ISO 11925. 2) (BS EN ISO 9239.1)

COLOURS:

Colour Fastness	(BS1006)
Light (BS1006:B02)	5
Wet Rubbing (BS1006:B01)	4 - 5
Dry Rubbing (BS1006:X12)	4 - 5
Wet Shampoo (BS1006:UK-TB)	4 - 5
Colour Options Available	12



paragon

Farfield Park
Manvers
Wath-upon-Dearne
Rotherham, S63 5DB.

T. +44 (0) 1709 763 839
F. +44 (0) 1709 763 813
E. sales@paragon-carpets.co.uk
W. www.paragon-carpets.co.uk