

**mat.works**  
Entrance Solutions

**TREADLOC 25**

part of the group

**paragon**  
CARPET TILES

Mat.Works is a Division of National Floorcoverings Ltd,  
the UK's leading manufacturer of commercial floor coverings.

# Treadloc 25



# Modular matting with class-leading performance

Treadloc 25 by Mat.Works is a revolutionary modular matting solution. Manufactured from nitrile rubber, the 25cm x 25cm tile may be small but packs an almighty punch when it comes to performance.

Specifically designed to withstand heavy footfall and wheeled traffic, Treadloc 25 will not expand, contract, fade or become brittle, nor will it bend or buckle under pressure making it an ideal heavy contract solution for entrance areas in every sector. Unlike aluminium solutions, Treadloc 25 can withstand slight undulations in the sub-floor, which are sometimes unavoidable, without compromising the strength and performance of the product.

Treadloc 25 tiles are easily interchangeable and designed with interlocking male and female components for ease of installation. The versatile tiles can be quarter-turned during installation to create a checkerboard effect allowing for multi-directional entrances. There is also the added benefit of being able to purchase individual Treadloc 25 tiles, meaning any damaged tiles can be replaced with ease.

Unlike some other modular matting systems available, Treadloc 25 can be installed outside without any complications. The system is fully drainable and can be fitted with Mat.Works' EXT Mat inserts for complete peace of mind.

To date, Treadloc 25 has been successfully installed in office complexes, apartment blocks, retail units, shopping centres and healthcare. Treadloc 25 is manufactured with copper compounds, a material which has proven anti-microbial properties, combating the spread of hospital-acquired infections.

Across all installations, the Mat.Works team work closely with clients to understand their requirements, providing expert advice throughout every step from specification and product selection, right through to installation.

For a truly modular entrance system that will stand the test of time, look no further than Treadloc 25.

**Treadloc 25 provides a flammability rating of Cf1-s2 (BS EN 14041:2004)**



## Perfect for Healthcare

The nitrile rubber in Treadloc 25 is now manufactured with copper compounds, a material that has been proven to have anti-microbial properties, combating the spread of hospital-acquired infections, including MRSA.

The product has been tested to ISO 22196, which specifies a method of evaluating the antibacterial activity of antibacterial-treated plastics, and other non-porous surfaces of products.

The results showed that the copper in the Treadloc 25 killed 99.29% of MRSA Bacterium.

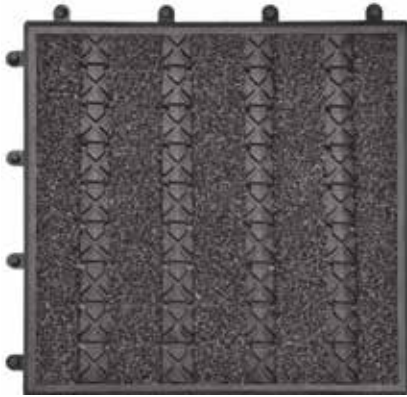


**When examined under the Coefficient of Friction test (TRRL Pendulum test in accordance with BS 7976-2:200+A1:2013), Treadloc 25 has been proven to provide a low risk for slips in both dry and wet conditions.**



# Treadloc 25

## Providing true flexibility



Workspace Entrance  
Victor Inserts



Workspace Entrance  
Viscount Inserts



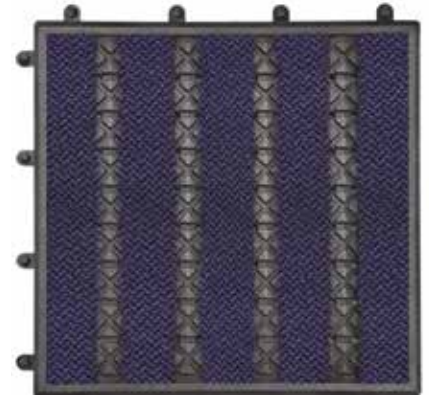
Workspace Entrance  
Vulcan Inserts



Workspace Entrance  
Vixen Inserts



Premier  
Charcoal Inserts



Premier  
Dark Blue Inserts



Premier  
Mercury Inserts



MW Maxim Yellow and  
MW Maxim Anthracite  
(Safety Colour Inserts)

Looking for  
something  
different?

Mat.Works provides a  
host of product inserts  
in a variety of colours to  
suit any requirement.

Twice the weight of leading competitor products, twice the durability.

# Specification



<b>Tile Size</b>	250mm x 250mm x 12mm
<b>Locking Guides</b>	Easy inter-locking system as standard Removable male and female connectors
<b>Composition</b>	Nitrile rubber composition
<b>Performance</b>	Nitrile rubber is resistant to oil, grease and fuel
<b>Wear Classification</b>	Heavy Contract class 33

## KEY FEATURES

- The “click-fit system” makes installation simple
- Weight cannot be rivalled in the current market
- Will not buckle or bounce under pressure, making it suitable for wheel and trolley traffic
- Can be fitted with a host of carpet inserts to match any style
- Cost-effective solution when compared to aluminium products

# Choose your system



## How to choose your Treadloc 25 system:

### Stage 1:

Start with your Treadloc 25 nitrile base



### Stage 2:

Choice of a host of insert options available, with Mat.Works' three most popular ranges listed below.

## Workspace Entrance

**Style** Tufted Cut Pile with integral scraper system  
**Fibre Construction** 100% solution dyed nylon



Workspace Entrance Victor



Workspace Entrance Vulcan



Workspace Entrance Vixen



Workspace Entrance Viscount

# Choose your system

## Premier

**Style**

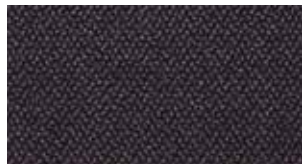
Tufted Twist Pile

**Fibre Construction**

80% Wool / 20% Nylon +  
monofilament scraper



Premier  
Mercury



Premier  
Charcoal



Premier  
Dark Blue

## MW Rib HD

**Style**

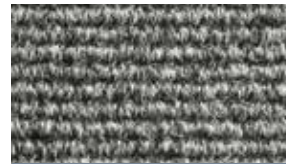
Tufted Twist Pile

**Fibre Construction**

85% Polypropylene,  
15% Recycled Polyester



MW Rib HD  
Anthracite



MW Rib HD  
Light Grey



MW Rib HD  
Deep Blue



MW Rib HD  
Natural

## MW Maxim

(only available with safety colour inserts)

**Style**

Specialist entrance carpet

**Fibre Construction**

85% Polypropylene,  
15% Recycled Polyester



MW Maxim  
Anthracite



MW Maxim  
Yellow

Treadloc 25 is also available with EXT Mat inserts, which allows for external installation.

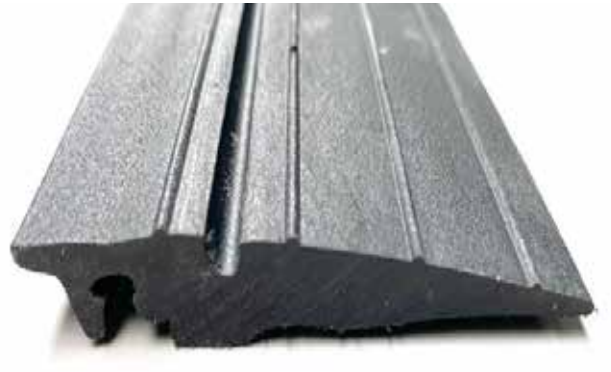
## TREADLOC 25

- Easy to install
- Suitable for wheel and trolley traffic
- Unrivalled weight
- Won't buckle or bounce under pressure

No matwell or recess? No problem!  
Treadloc 25 has an optional click-fit ramping system...



Dimensions: W 125mm x H 125mm



Dimensions: W 66mm x L 2000mm x H 12mm



Treadloc 25 shown with colour option incorporated into debris channel

## TREADLOC 25 RAMPING SOLUTION

### Description:

Treadloc 25 can be surface-mounted, with the option of a heavy duty click-fit ramping system, making the product suitable for buildings without a matwell or recess.

The heavy-duty ramped edges allow wheeled and trolley access, as well as helping to prevent trip accidents. The system allows our product to be used to create a 'surface matwell' where a mat is laid directly on top of the floor.

### Key Features:

Ramping system to enable Treadloc 25 to be surface-mounted

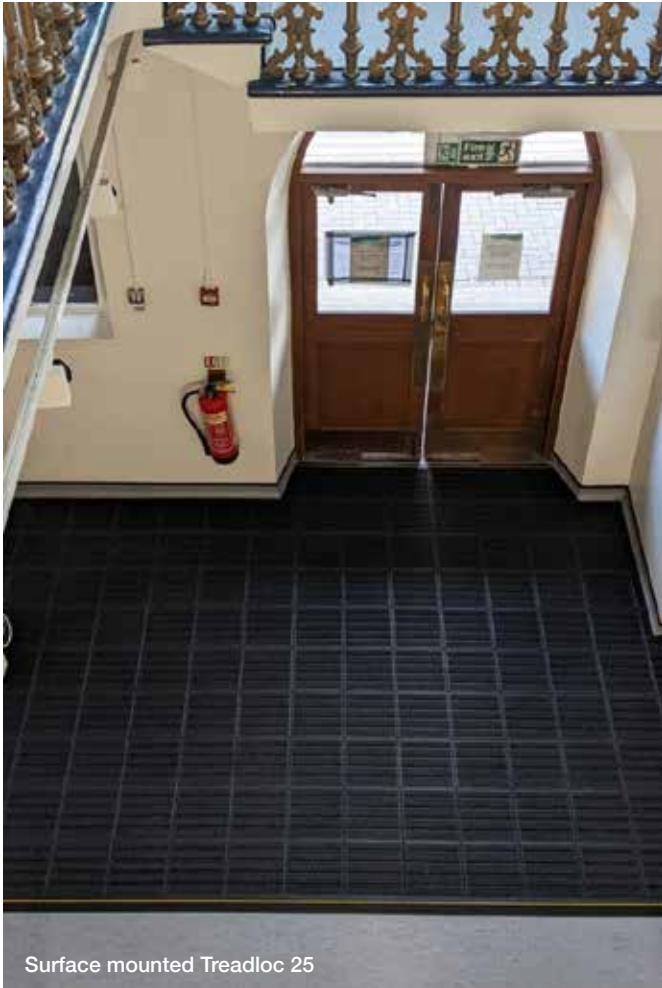
Click fit mechanism for easy installation

Pre-mitred corners for accuracy

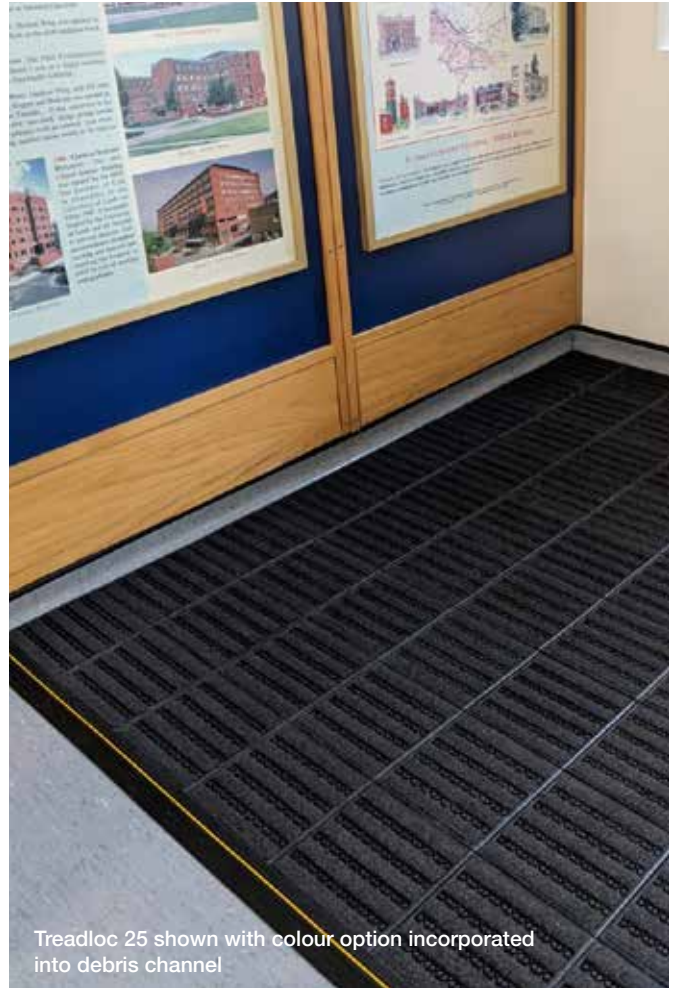
Available in 2m lengths

Incorporate a colour of your choice into the ramp debris channel, for a striking and stand-out finish (as shown in the image on the left).

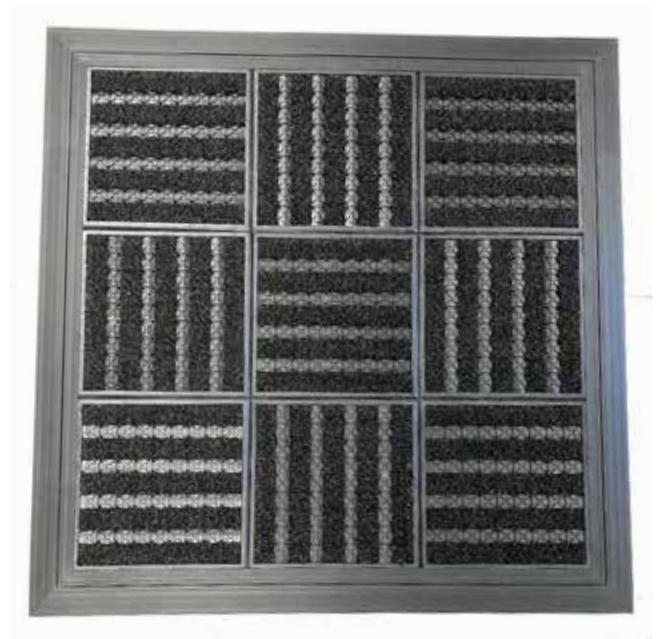
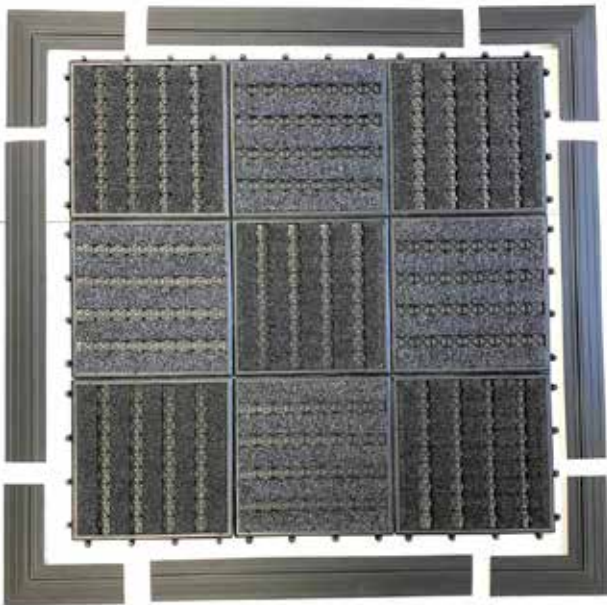




Surface mounted Treadloc 25



Treadloc 25 shown with colour option incorporated into debris channel



Treadloc 25 surface mounted with ramping solution  
Pre mitred corners available as shown above

# Treadloc 25







# mat.works

Entrance Solutions

## Get in touch to order your samples

Farfield Park, Manvers, Wath-upon-Deerne, Rotherham, S63 5DB

T: +44 (0) 1709 763 805 | E: [samples@mat-works.co.uk](mailto:samples@mat-works.co.uk)

[www.mat-works.co.uk](http://www.mat-works.co.uk)

For any other enquiries

T: +44 (0) 1709 763 839 | E: [sales@mat-works.co.uk](mailto:sales@mat-works.co.uk)

part of the group

