



DUERA

WOOD EFFECT



Twilight Ash, 3121



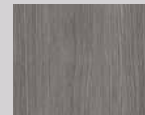
Barleycorn Oak, 3128



Devonshire Oak, 3129



Edwardian Oak, 3131



Dark Linear Wood, 3123

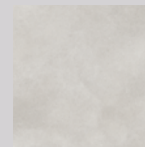


Wharf Side Ash, 3124



Hemingway Oak, 3126

STONE EFFECT



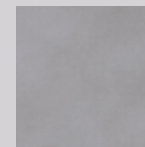
Polished Cement, 3132



Alloyed Cement, 3133



Downtown Cement, 3135



Suburban Cement, 3134



Cliffside Slate, 3136

Style	Luxury Commercial Vinyl
Material	Heterogenous PVC
Surface Treatment	PUR
Total Weight	8000gsm
Total Thickness	5mm
Wear Layer Thickness	0.7mm
Wood Effect Plank Size	17.78cm x 121.92cm
Stone Effect Plank Size	30.48cm x 60.96cm
Stone Effect Tile Size	60cm x 60cm
Wood Effect Planks Per Box	10 (2.17m ²)
Stone Effect Planks Per Box	8 (1.86m ²)
Stone Effect Tiles Per Box	6 (2.16m ²)
Anti-static	Suitable for use with computers. Less than 2Kv
Colour Fastness	Light (BS EN ISO 105:B02) ≥6
Flammability BS EN 13501	Class Bfl-s1
Castor Chair Test	Suitable for use with castor chairs
Dimensional Stability	<0.1%
Residual Indentation	0.05mm
Underfloor Heating	Suitable, maximum 27°C