

parallel lines
parallel reflections

reflect your style in two premium structured loop piles with modern colourways

heavy contract

10 colourways

Parallel Reflections

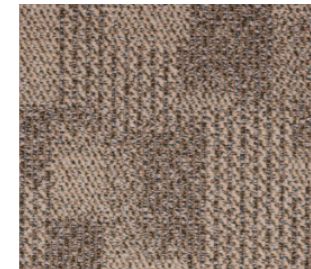




Parallel Reflections Madrid Grey



Parallel Reflections Sydney Blue



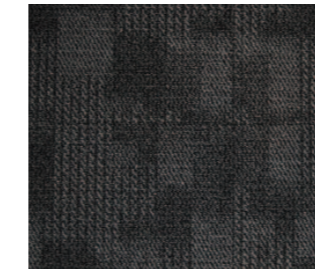
Parallel Reflections New York



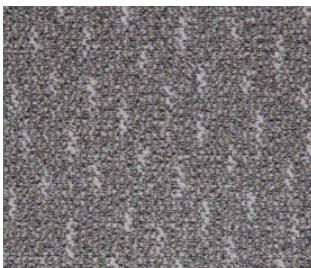
Parallel Reflections Paris Sand



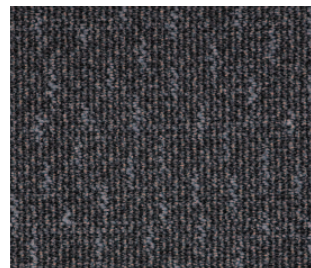
Parallel Reflections Rome Cream



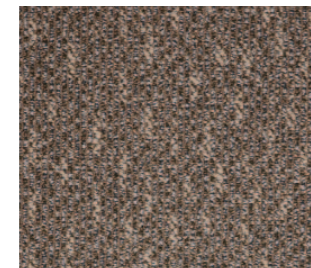
Parallel Reflections Pittsburgh Charcoal



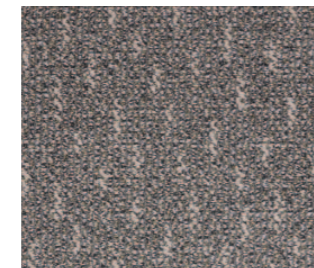
Parallel Lines Seville Grey



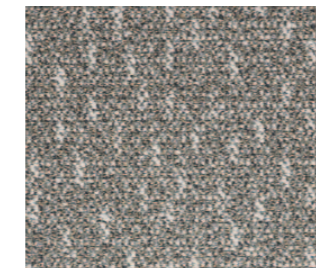
Parallel Lines Melbourne Blue



Parallel Lines Washington Beige



Parallel Lines Monaco Sand



Parallel Lines Milan Cream



Parallel Lines Detroit Charcoal





Parallel Reflections

Heavy contract suitable for commercial, retail, leisure, schools and colleges















10 year warranty

Structured loop pile

1/12th gauge

100% solution dyed nylon

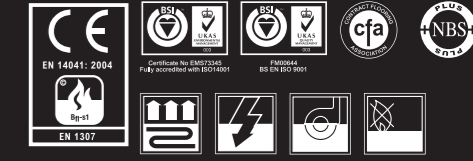
Up to 55% recycled content in the bitumen backing

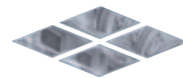
-  **Style**
1/12" Multi level Textured Patterned Loop Pile Tile
-  **Yarn Construction**
100% Solution Dyed NylonBASF Zeftron 2000 Nylon with built in static control
-  **Pile Yarn Weight**
814 gsm
-  **Pile Height**
4 - 4.5mm
-  **Total Weight**
4322 gsm
-  **Total Height**
7mm
-  **Backing**
Bitumen Backed
-  **Dimensions**
50cm x 50cm
-  **Wear Classification**
Heavy Contract
-  **Anti-static**
< 2Kv body voltage
Suitable for use with computers
-  **Colour Fastness**
To Light (BS EN ISO105-B02)
To Water (BS EN ISO105-E01)
Better than 6
5
-  **Flammability**
Floorcoverings tested to BS4790 (Hot Metal Nut test)
Euroclass Flammability (BS EN ISO 9339) (BS EN ISO11925-2)
Low Radius of Char
Bfl-s1
-  **Castor Chair Test**
BS EN 985
PR > 2.9 Continuous use
PL > 2.5 Continuous use
-  **Warranty**
10 Years

INSTALLATION
Sub floors should be clean, dry and flat and prepared in accordance with BS5325. Timber floors should be covered with plywood or other appropriate sheet materials. For tiles use F Ball tackifier F41 or Laybond 79. Tiles may be laid tessellated or broadloom. Tiles should be allowed to condition for a minimum of 24 hours at the expected temperature and humidity prevailing when the building is in use. Further installation information is available from the Paragon Sales Office.

COLOUR
For technical reasons, as with all textile materials, it may not be possible to colour match from different batches. Orders requiring colour match should be placed at the same time. Production may therefore show variations to the sample card.

MAINTENANCE
It is recommended that a maintenance schedule be initiated from the date of installation to achieve maximum life expectancy of the product. Regular vacuum cleaning with a twinmotored upright vacuum cleaner is essential. All spillages and stains should be attended to immediately. For detailed information, please consult the Paragon cleaning and maintenance guide. It is imperative that all internal carpets are well protected from outside soiling and moisture by the use of barrier matting such as MatWorks, also available from Paragon.





paragon

Farfield Park
Manvers
Wath-upon-Dearne
Rotherham, S63 5DB.

T. +44 (0) 1709 763 839
F. +44 (0) 1709 763 813
E. sales@paragon-carpets.co.uk
W. www.paragon-carpets.co.uk