

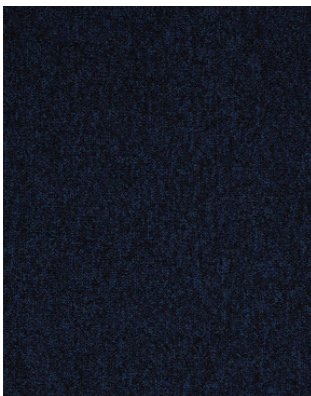
Toccarre

12 colourways of Italian style create the perfect commercial setting

Breem A+ Rated

12 colourways

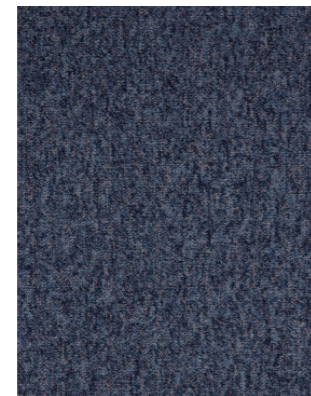




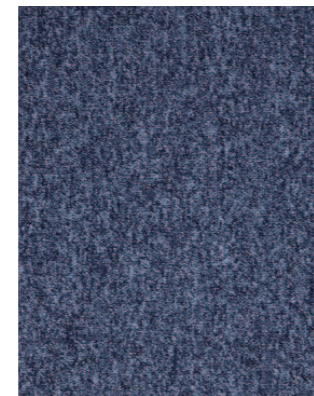
Tutto



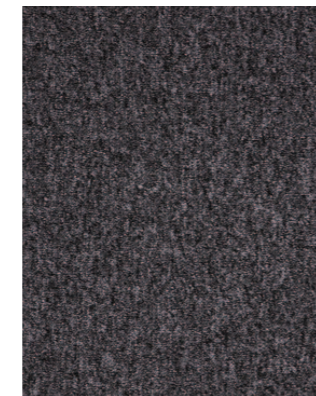
Grigia



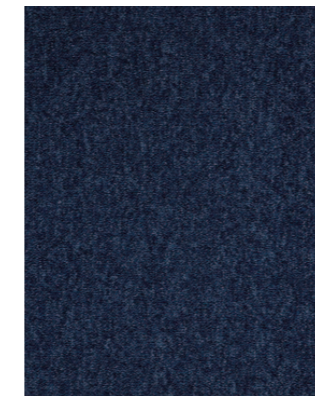
Azzurra



Blu



Termi



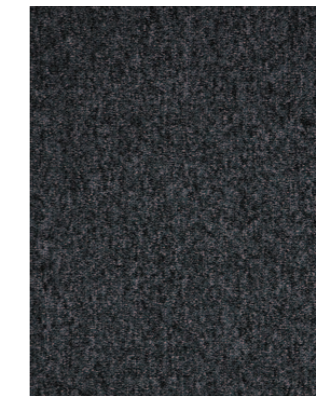
Moderno



Fresco



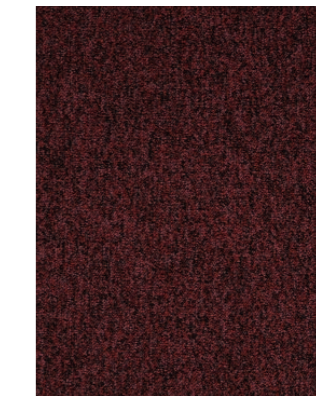
Marrone



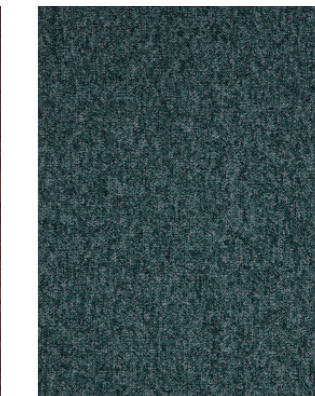
Menta



Montagna



Desmo



La Mela



Toccarre Fresco

Seal of Approval BRE A+ Rated

100% Meraklon

Heavy Contract



Recyclable - Product can be repurposed at the end of its lifecycle as a non-standard option




Available in 12 colourways



Suitable for all Commercial, Education, Health and Retail markets

Manufactured in the cleanest carpet tile factory in Europe

Up to 55% recycled content in the bitumen backing

-  **Style**
1/10" gauge Tufted Loop Pile Tile
-  **Yarn Construction**
100% Meraklon
-  **Pile Yarn Weight**
630 gsm
-  **Pile Height**
3mm
-  **Pile Density**
214,567 tufts per m2
-  **Total Weight**
4430 gsm
-  **Total Thickness**
6mm (Tile)
-  **Backing**
Bitumen
-  **Dimensions**
50cm x 50cm
-  **Classification**
Heavy Contract

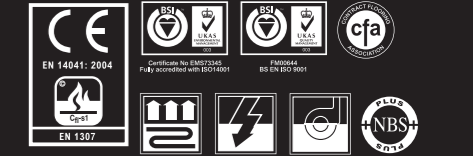
-  **Anti-static**
Suitable for use with computers
-  **Colour Fastness**
To Light (BO2) 6
Wet Rubbing (BS1006:B01) 4 - 5
Dry Rubbing (BS1006:X12) 4 - 5
Shampoo (BS1006:UK-TB) 4 - 5
-  **Flammability**
Floorcoverings tested to BS4790 Low Radius of Char

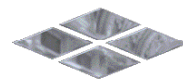
Euroclass Flammability (BS EN 13501) Cfl-s1
-  **Castor Chair Test**
BS EN 985 / 2.9 continuous use
-  **Warranty**
10 Years

INSTALLATION
Sub floors should be clean, dry and flat and prepared in accordance with BS5325. Timber floors should be covered with plywood or other appropriate sheet materials. For tiles use F Ball tackifier F41 or Laybond 79. Tiles may be laid tessellated or broadloom. Tiles should be allowed to condition for a minimum of 24 hours at the expected temperature and humidity prevailing when the building is in use. Further installation information is available from the Paragon Sales Office.

COLOUR
For technical reasons, as with all textile materials, it may not be possible to colour match from different batches. Orders requiring colour match should be placed at the same time. Production may therefore show variations to the sample card.

MAINTENANCE
It is recommended that a maintenance schedule be initiated from the date of installation to achieve maximum life expectancy of the product. Regular vacuum cleaning with a twinmotored upright vacuum cleaner is essential. All spillages and stains should be attended to immediately. For detailed information, please consult the Paragon cleaning and maintenance guide. It is imperative that all internal carpets are well protected from outside soiling and moisture by the use of barrier matting such as MatWorks, also available from Paragon.





paragon

Farfield Park
Manvers
Wath-upon-Dearne
Rotherham, S63 5DB.

T. +44 (0) 1709 763 839
F. +44 (0) 1709 763 813
E. sales@paragon-carpets.co.uk
W. www.paragon-carpets.co.uk