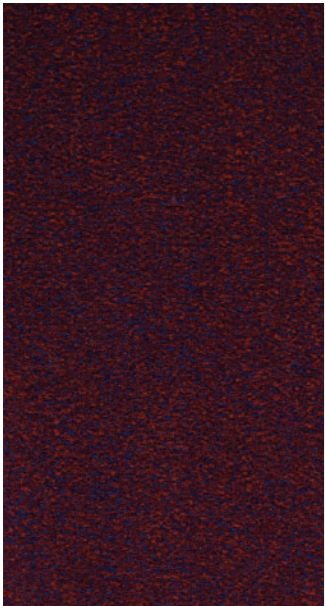


workspace cutpile

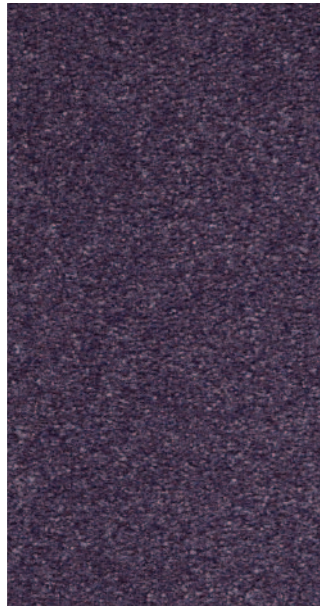
Make the most of any workspace with our high performance cutpile

heavy contract
12 colourways

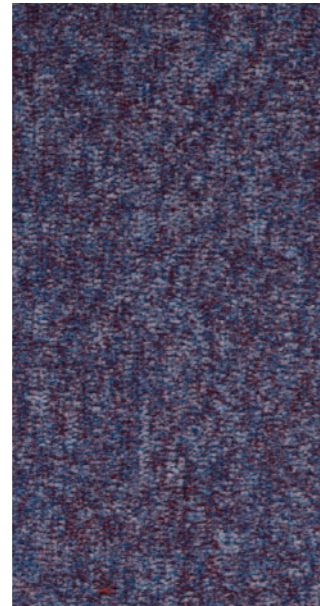




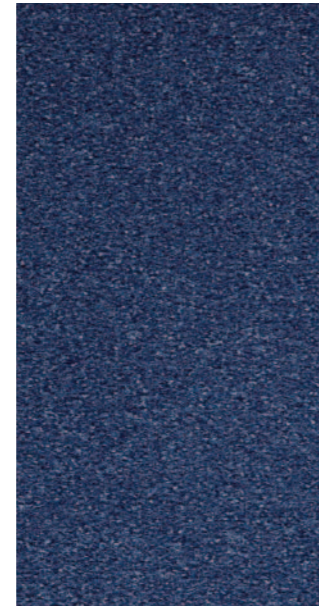
Salsa



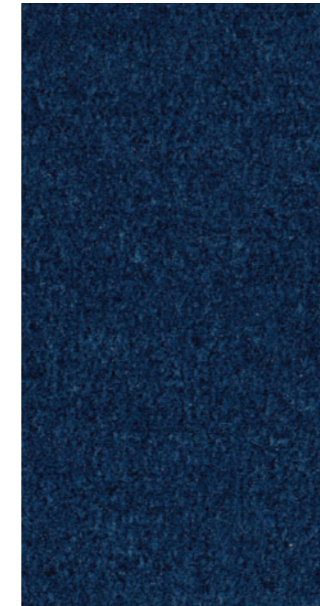
Lilac



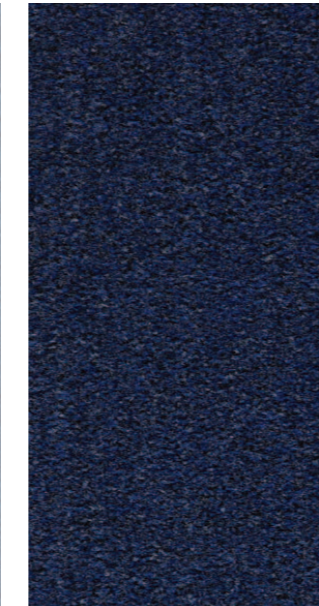
Grape Blue



Sky Blue



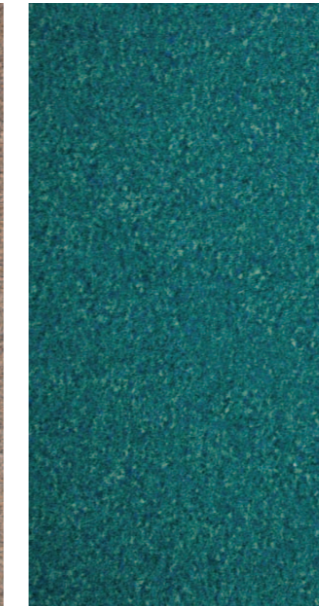
Biscay Blue



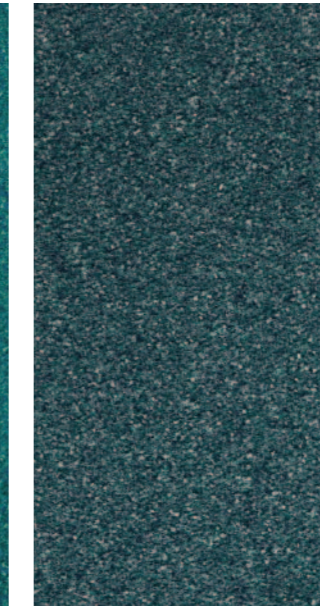
Coastal Blue



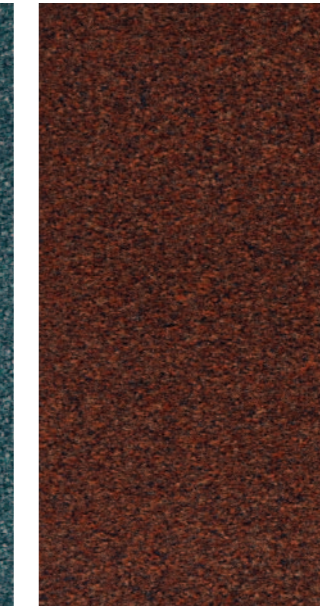
Wheat



Gecko Green



Nordic Green



Cayenne



Iron Grey



Steel Grey



Heavy Contract

Solution Dyed Nylon to give superior performance














Versatile Cutpile



Recyclable - Product can be repurposed at the end of its lifecycle as a non standard option

10% recycled content within the yarn. A non standard 30% recycled content within the yarn product is also available

Suitable for Commercial, Retail and Education Markets

Up to 55% recycled content in the bitumen backing

-  **Style**
Tufted Cut Pile 1/10" gauge
-  **Yarn Construction**
100% Solution Dyed Nylon
-  **Pile Yarn Weight**
850 gsm
-  **Pile Height**
5mm
-  **Pile Density**
143,700 tufts per m2
-  **Total Weight**
4550 gsm
-  **Total Thickness**
8.5mm (Tile)
-  **Backing**
Bitumen
-  **Dimensions**
50cm x 50cm
-  **Wear Classification**
Heavy Contract
-  **Anti-static**
Suitable for use with computers. Less than 2Kv
-  **Colour Fastness**
To Light (BS EN ISO105-B02) 6
To Water (BS EN ISO105-E01) 4 - 5
To Rubbing (BS EN ISO105-X12) 4 - 5
To Shampoo BS 1006 – UK – TB 4 - 5
-  **Flammability**
Floorcoverings tested to BS4790 (Hot Metal Nut Test) Low Radius of Char

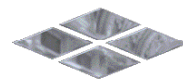
Euroclass Flammability (BS EN ISO 9239) (BS EN ISO 11925-2) Bfl-s1
-  **Castor Chair Test**
BS EN 9852.4 Suitable for use with castor chairs
-  **Warranty**
10 Years

INSTALLATION
Sub floors should be clean, dry and flat and prepared in accordance with BS5325. Timber floors should be covered with plywood or other appropriate sheet materials. For tiles use F Ball tackifier F41 or Laybond 79. Tiles may be laid tessellated or broadloom. Tiles should be allowed to condition for a minimum of 24 hours at the expected temperature and humidity prevailing when the building is in use. Always use seam sealer if an impermeable finish is required. Further installation information is available from the Paragon Sales Office.

COLOUR
For technical reasons, as with all textile materials, it may not be possible to colour match from different batches. Orders requiring colour match should be placed at the same time. Production may therefore show variations to the sample card.

MAINTENANCE
It is recommended that a maintenance schedule be initiated from the date of installation to achieve maximum life expectancy of the product. Regular vacuum cleaning with a twin motored upright vacuum cleaner is essential. All spillages and stains should be attended to immediately. For detailed information, please consult the Paragon cleaning and maintenance guide. It is imperative that all internal carpets are well protected from outside soiling and moisture by the use of barrier matting such as MatWorks, also available from Paragon.





paragon

Farfield Park
Manvers
Wath-upon-Dearne
Rotherham, S63 5DB.

T. +44 (0) 1709 763 839
F. +44 (0) 1709 763 813
E. sales@paragon-carpets.co.uk
W. www.paragon-carpets.co.uk